

INSTALLING DYMO 330 TURBO PRINTER ON WINDOWS 7 WITH SHARED ACCESS

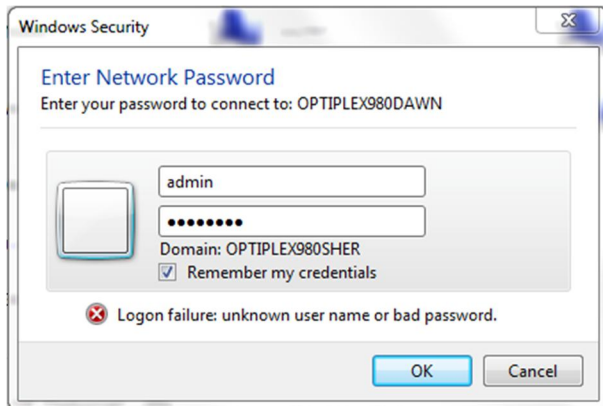
From Computer that the printer will be plugged into the USB port:

- 01) Do NOT plug in printer yet.
- 02) Install "LabelWriterDrivers-x64.exe"
- 03) Plug in USB cable from printer and power on.
- 04) Install "Win7_DymoLabelPrinterSoftware_v8.3.0.1242.exe".
- 05) Print test label from software.
- 06) Share printer

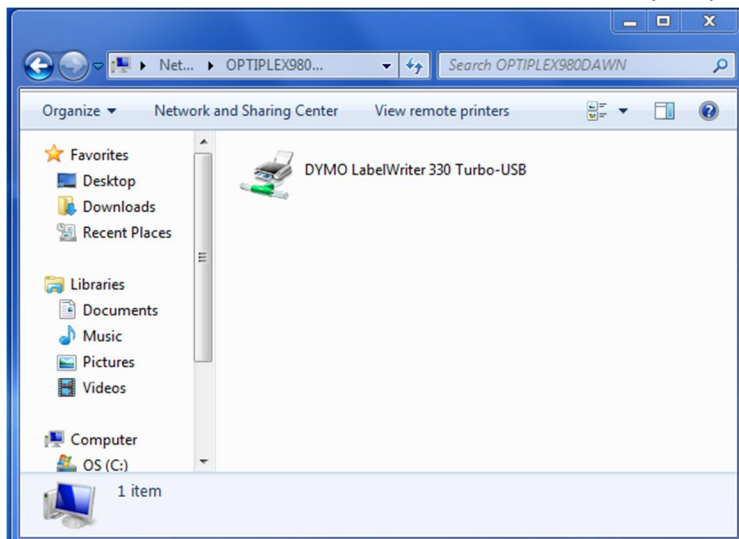
NOTE: Before proceeding BOTH the Local AND each networked remote PC must have Windows login passwords.

From all remote computers:

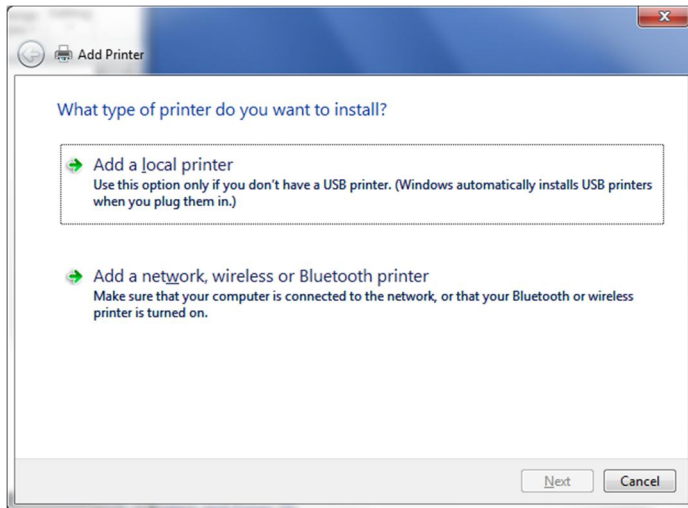
- 01) Using Windows Explorer connect to the main PC and click option to save login



- 02) You will then see the main PC listed with the shared Dymo printer. DO NOT CLICK ON IT

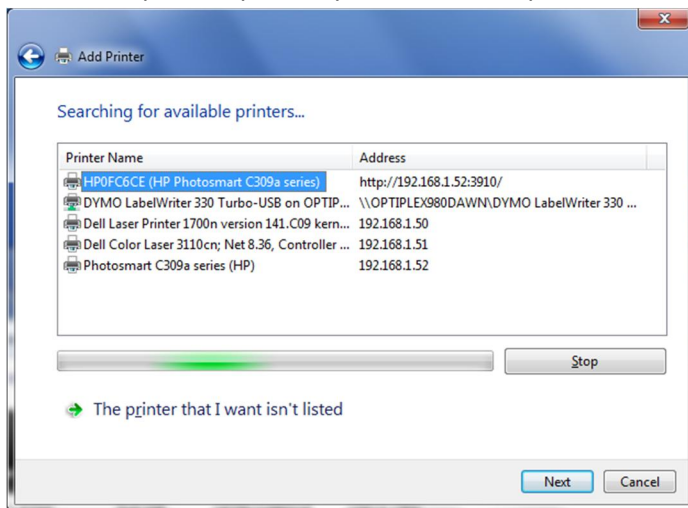


03) Open “Devices and Printers” and choose “Add a Printer”

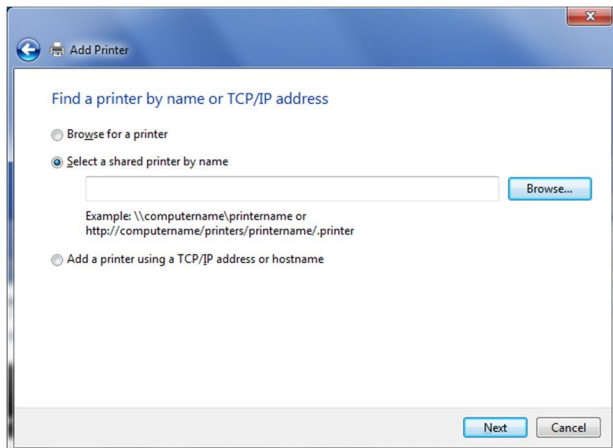


04) Choose “Add a network, wireless or Bluetooth printer”

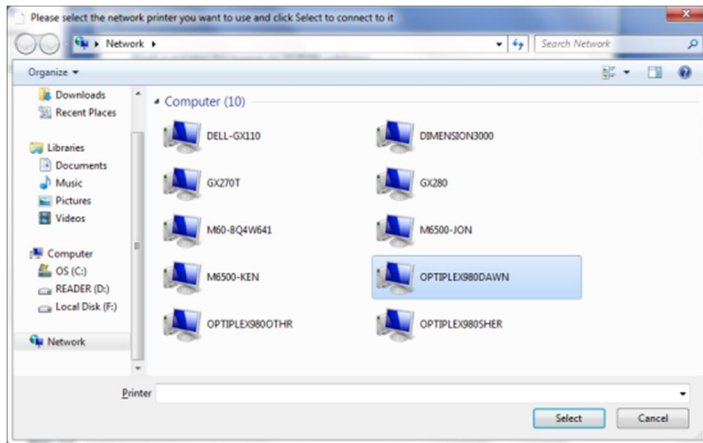
05) The search process probably won't find the printer, so choose “The printer that I want isn't listed”



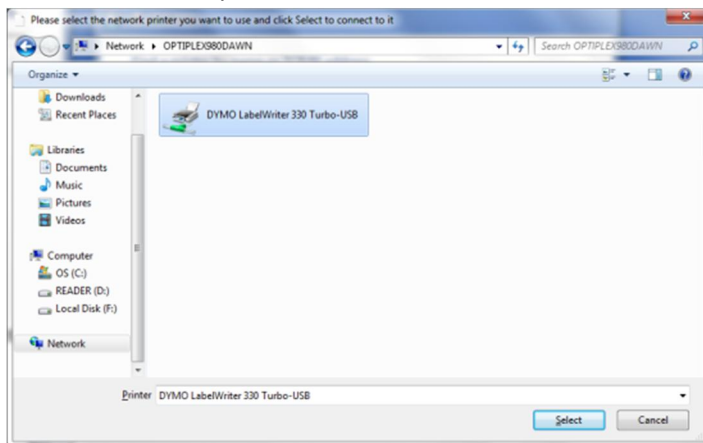
06) Select “Select a shared printer by name” and use the Browse button to find it.



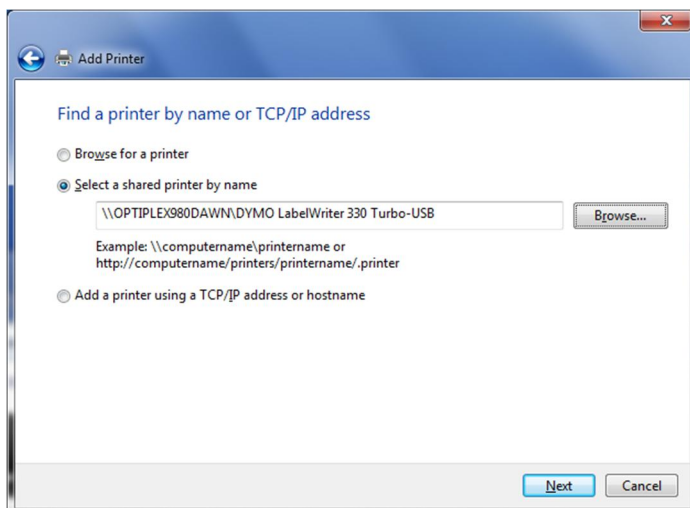
07) Select the PC the shared printer is connected to:



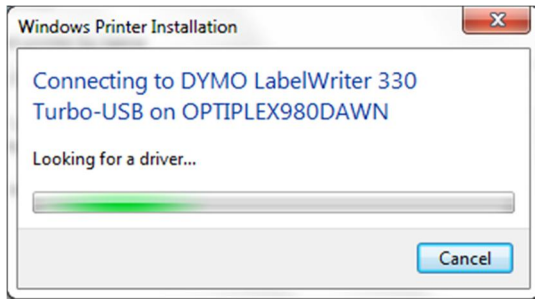
08) Select the shared printer:



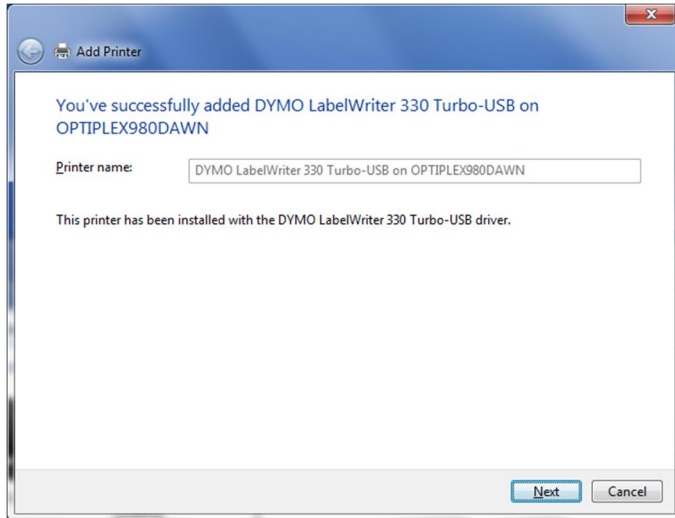
09) Click Next



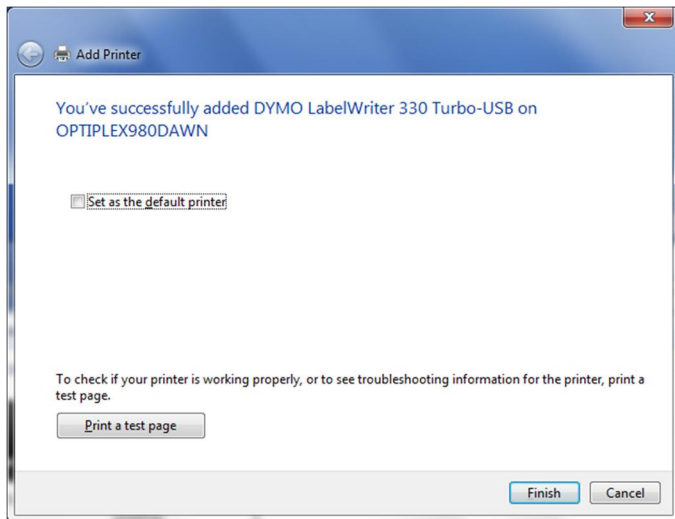
10) You'll see the following connecting window



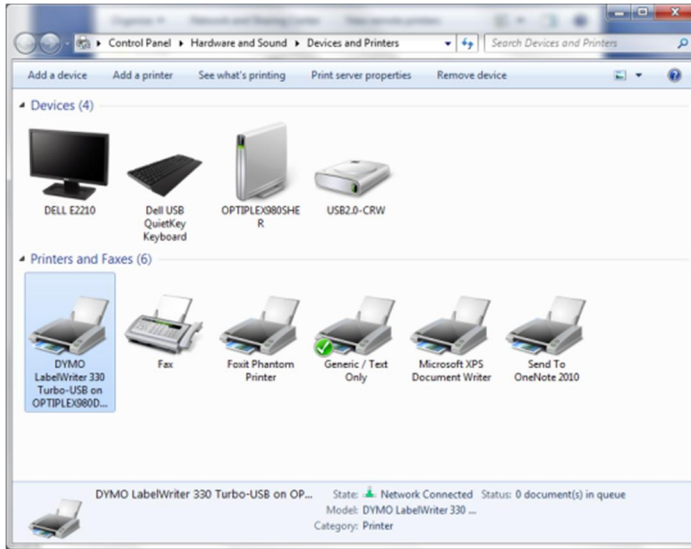
11) If successful you'll see this window and then click Next.



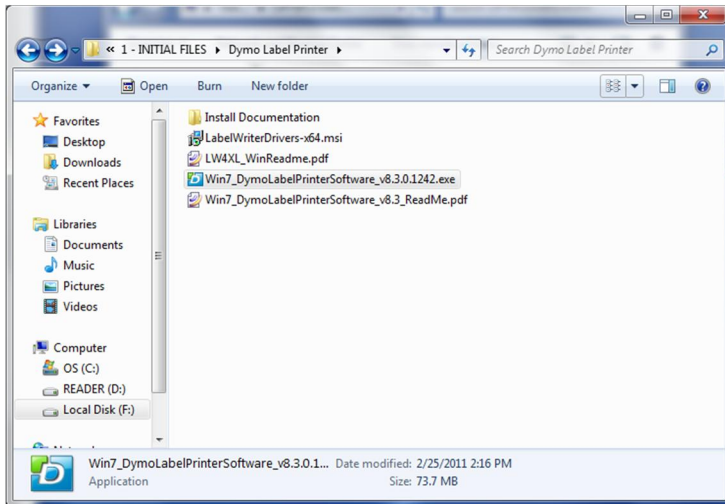
12) Click Finish



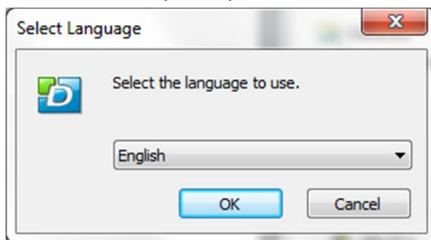
13) The Dymo printer will now be listed in the Printers section

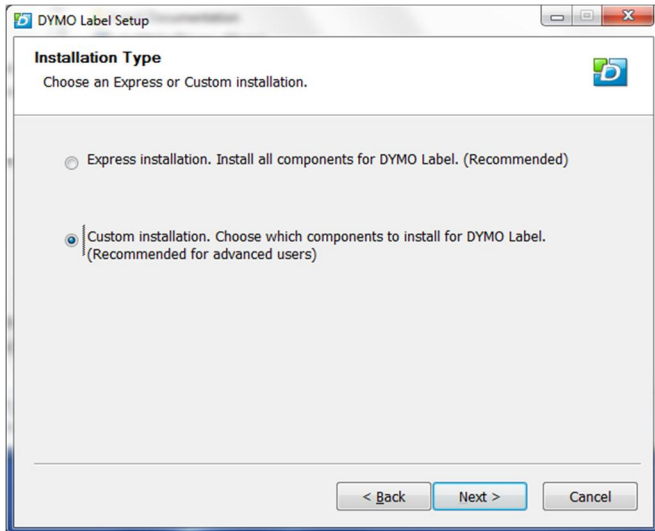
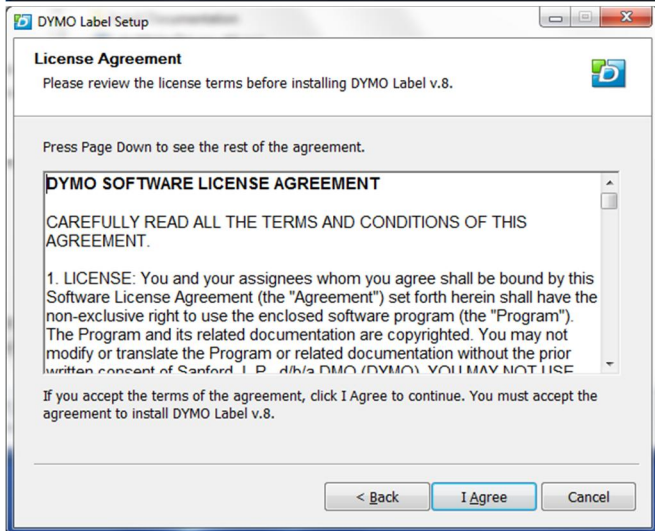


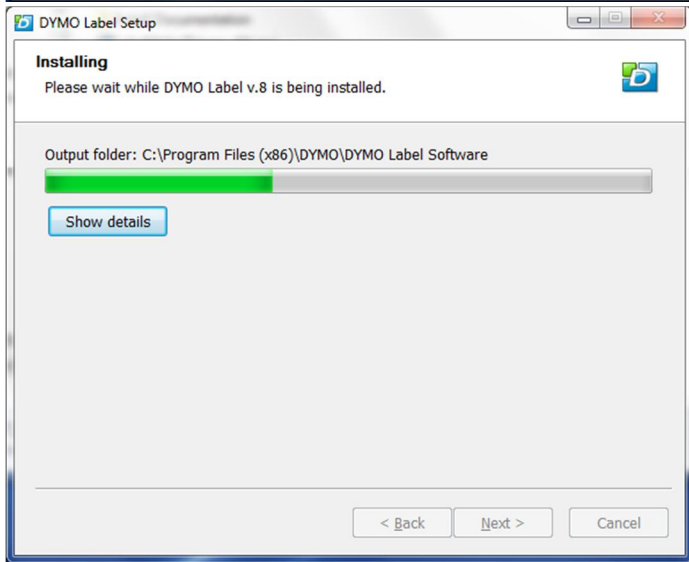
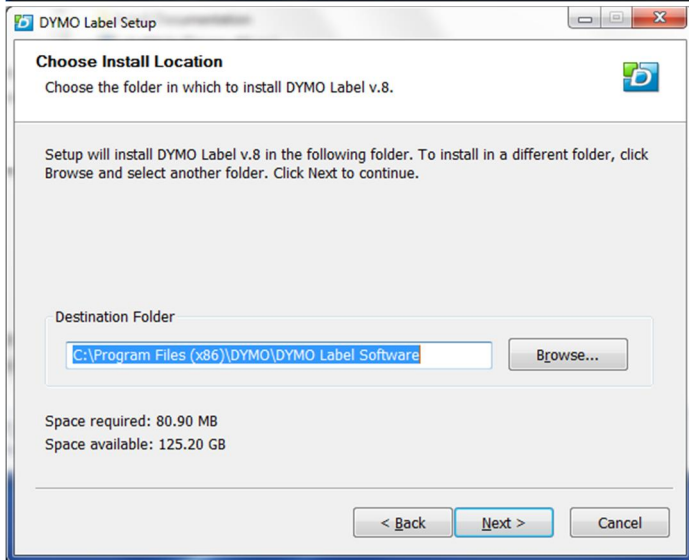
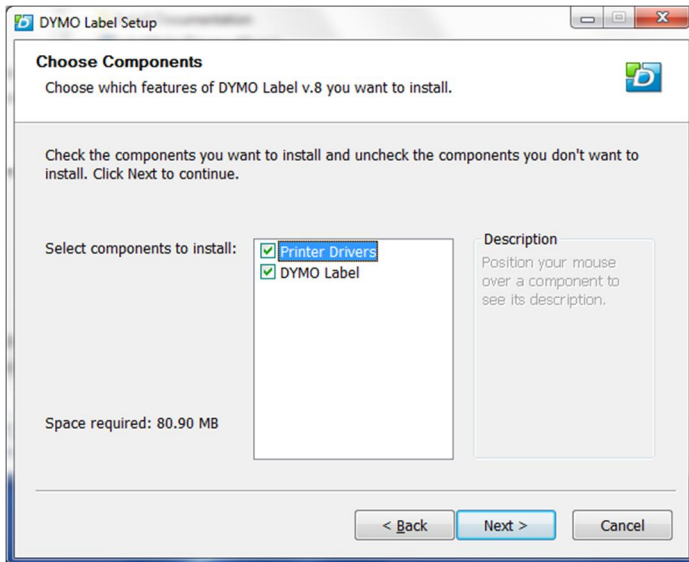
14) Now install the printer label making software “Win7_DymoLabelPrinterSoftware_v8.3.0.1242.exe”

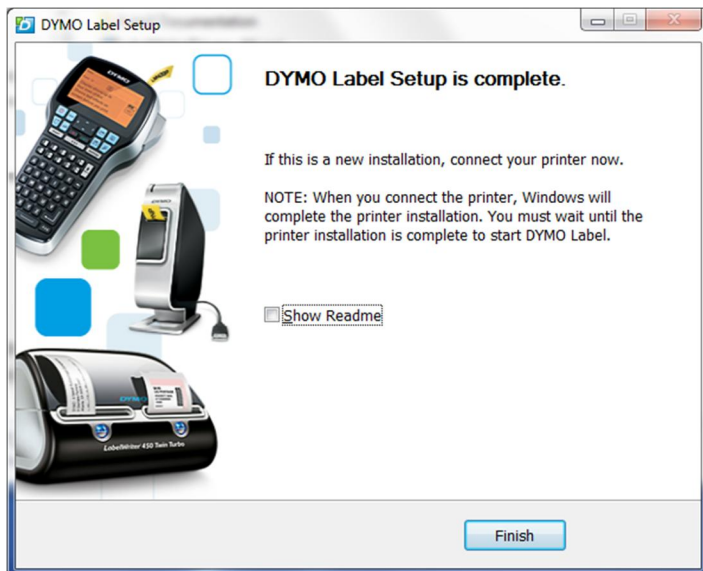


15) Here are the prompts:









After clicking Finish it will appear to hang...just wait!

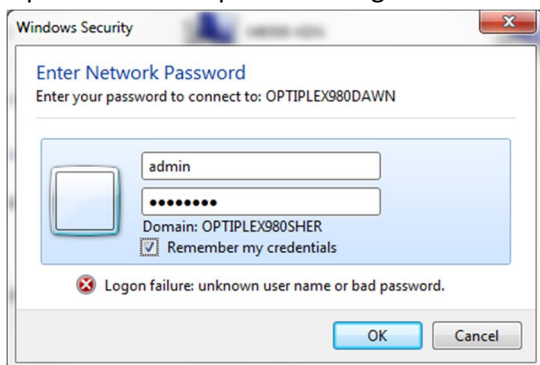
16) Open software and print the default text label.

17) Set permissions for the printer to Full for all users

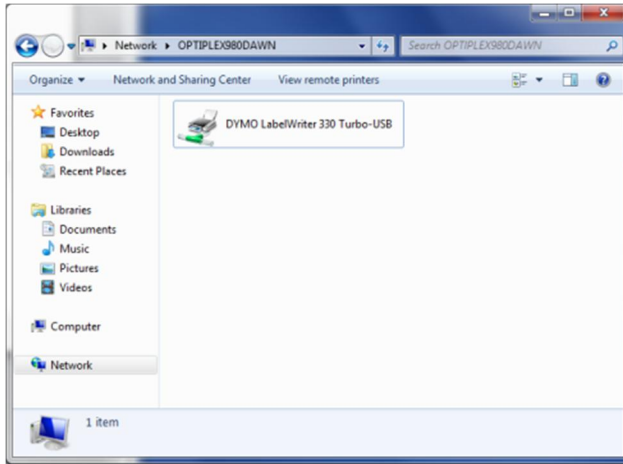
18) Reboot

19) Assuming each user has a windows login already, login to each windows user and do the following:

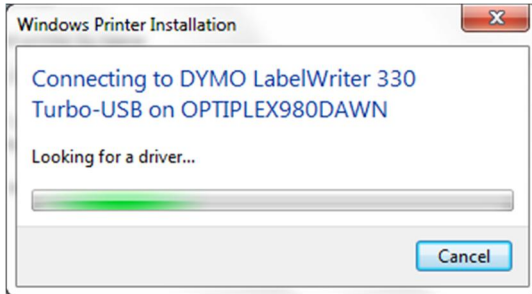
20) Open windows Explorer and login to main PC with shared printer.



21) Double click on the shared printer



22) You'll see the connecting dialog



23) That's it!!